




MACTILE

gerflor.com



**Gerflor**<sup>®</sup>  
theflooringroup

# MACTILE

 2 m	 300x300 mm 600x600 mm	PU	 100 % recyclable
--	---	----	--



0603 Bright White



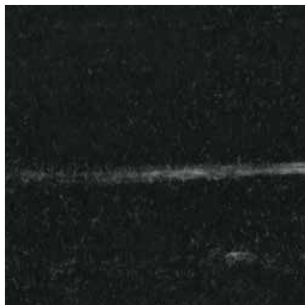
0607 Pearl



0606 Snow White



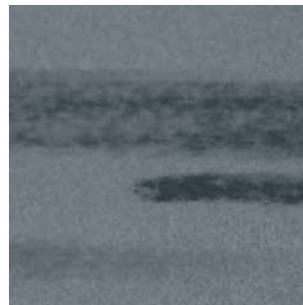
0613 Grey



0619 Black



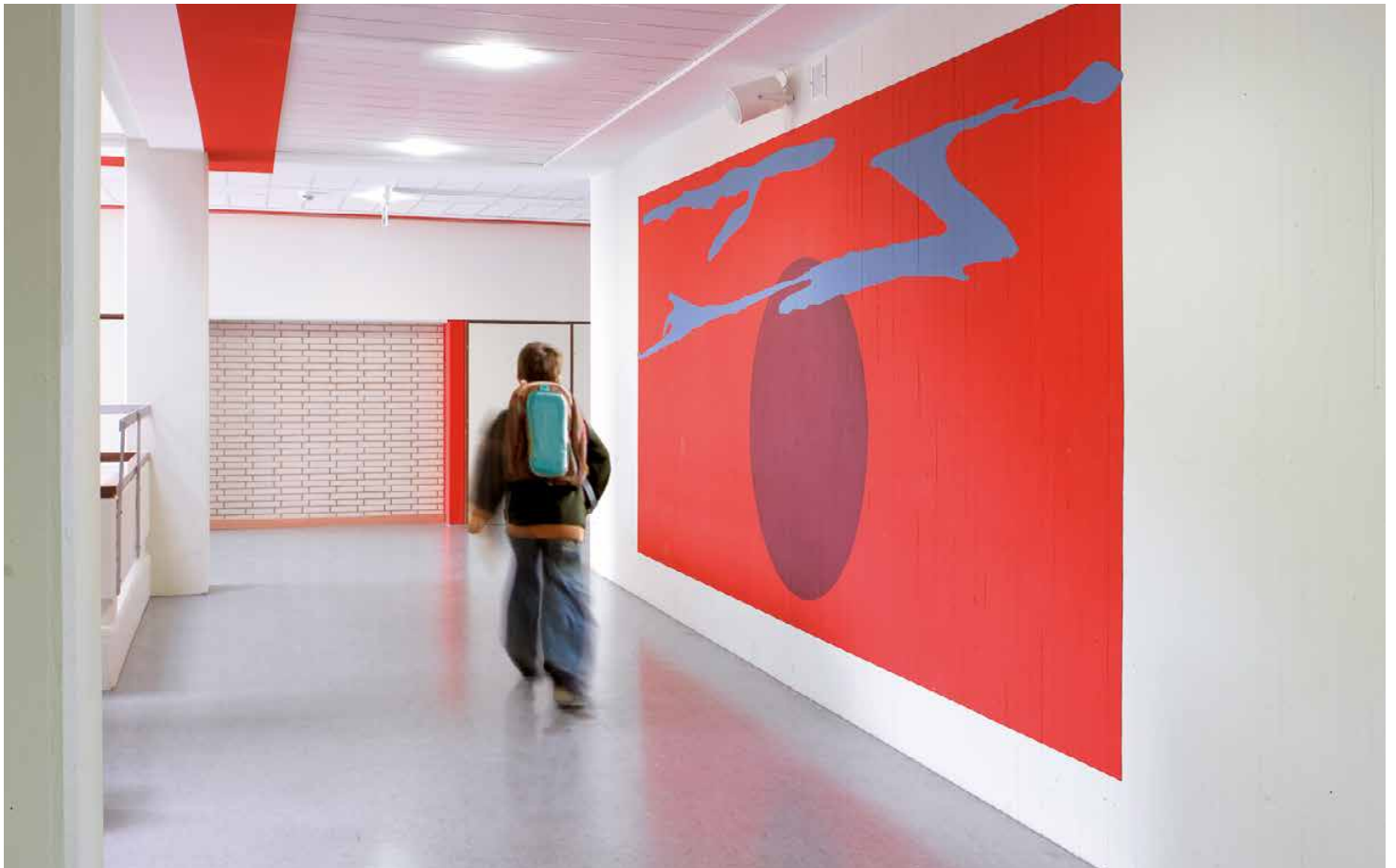
0615 Pewter



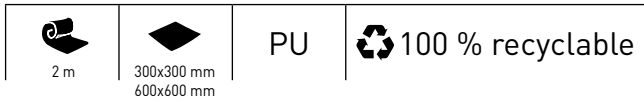
0616 Dark Grey



0612 Stormy Grey



# MACTILE



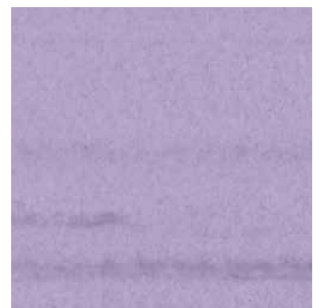
0673 Cobalt



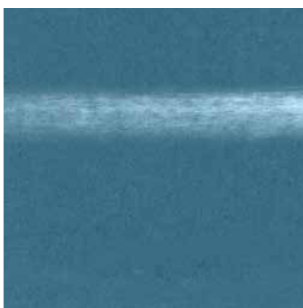
0671 Sky Blue



0672 Blue



0660 Lavander



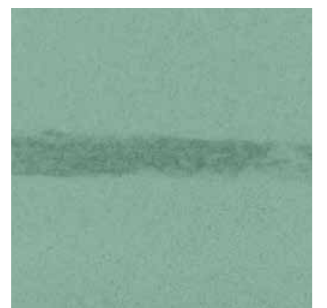
0676 Ocean Blue



0659 Forest



0657 Rosemary



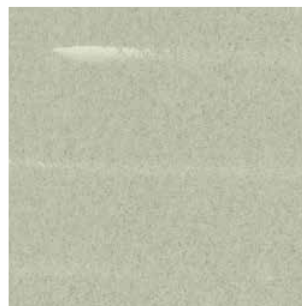
0656 Basil



0614 Misty



0610 White






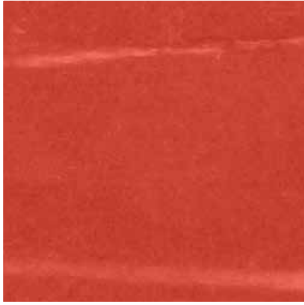
0652 Mint



0653 Apple Green

# MACTILE

 2 m	 300x300 mm 600x600 mm	PU	 100 % recyclable
--	---	----	--



0628 Signal Red



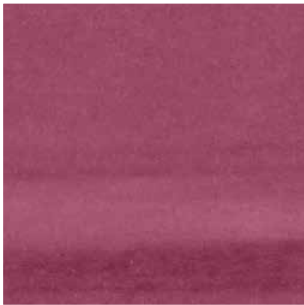
0623 Red Berries



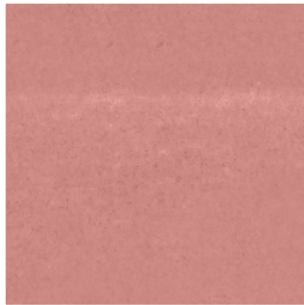
0647 Clay



0646 Cinnamon



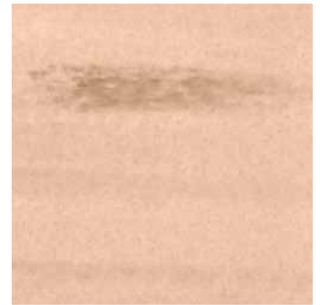
0663 Dark Raspberry



0622 Pink



0620 Pebble Stone



0685 Beige



0644 Ambre



0645 Sunset



0686 Camel



0688 Brown



0641 Parchment



0642 Cream





0682 Sandal



0681 Desert Grey

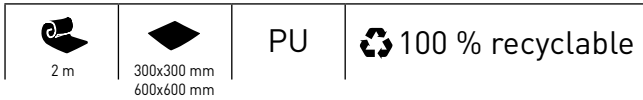


 Homogeneous Roll

 Homogeneous Tile

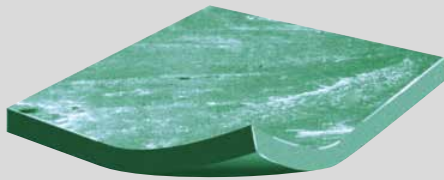
Due to the small size of the cuts, the samples do not reflect the actual pattern of the product.

# MACTILE



## YOUR FLOORING SOLUTION FOR PUBLIC BUILDING

- ▶ Surface quality => resistance to high traffic
- ▶ PU Treatment => reduced maintenance costs
- ▶ Mactile Classic: Anti-static (< 2 kV)



### DESIGN AND DECORATIVE SOLUTIONS

- ▶ Complete new contemporary colour selection

### ENVIRONMENTALLY RESPONSIBLE

- ▶ 100% recyclable product
- ▶ Made with more than 90% renewable resources (mineral quartz particles)
- ▶ Indoor air quality: low VOC emissions
- ▶ No heavy metals
- ▶ Made in KSA

CLASSIC	CLASSIC	FLEXIBLE	FLEXIBLE
300x300 mm	600x600 mm	2 m 300x300 mm	600x600 mm

#### DESCRIPTION

	EN 428	mm	1.6 / 2.0 / 2.5 / 3.0 / 3.2	2.0 / 2.5 / 3.0 / 3.2	1.6 / 2.0 / 2.5 / 3.0 / 3.2	2.0 / 2.5 / 3.0 / 3.2
Total thickness	EN 428	mm	1.6 / 2.0 / 2.5 / 3.0 / 3.2	2.0 / 2.5 / 3.0 / 3.2	1.6 / 2.0 / 2.5 / 3.0 / 3.2	2.0 / 2.5 / 3.0 / 3.2
Weight	EN 430	g/m <sup>2</sup>	3050 / 3920 / 4860 / 6000 / 6500	3920 / 4860 / 6000 / 6500	3050 / 3920 / 4860 / 6000 / 6500	3920 / 4860 / 6000 / 6500
Width / Length of sheets	EN 426	cm/lm	-	-	200 / 10	-
Tile size	EN 427	mm	300 x 300	600 x 600	300 x 300	600 x 600
Approx. number of tiles per box	-	-	90 / 70 / 56 / 46 / 44	22 / 18 / 15 / 14	90 / 70 / 56 / 46 / 44	22 / 18 / 15 / 14
Approx. area coverage per box	-	m <sup>2</sup>	8.10 / 6.30 / 5.04 / 4.14 / 3.96	7.92 / 6.48 / 5.40 / 5.04	8.10 / 6.30 / 5.04 / 4.14 / 3.96	7.92 / 6.48 / 5.40 / 5.04
Approx. weight per box	-	kg	25	31	25	31
Approx. coverage per roll	-	m <sup>2</sup>	-	-	20	-
Approx. gross weight of roll	-	kg	-	-	(1.60) 63 / (2.00) 83 / (3.00) 115	-

#### CLASSIFICATION

Norm / Product specification			EN 654	EN 654	EN 649	EN 649
European classification	EN 685	class	34-43	34-43	34-43	34-43
Fire rating	EN 13 501 -1	class	Bfl-s1	Bfl-s1	Bfl-s1	Bfl-s1
Slip resistance wet	DIN 51 130	class	R9	R9	R9	R9
Static electrical propensity	EN 1815	kV	< 2	< 2	< 2	< 2

#### PERFORMANCES

Wear resistance	EN 660.2	mm <sup>3</sup>	≤ 7.5	≤ 7.5	≤ 4.0	≤ 4.0
Wear group	EN 654	class	M	M	-	-
	EN 649	class	-	-	P	P
Dimensional stability	EN 434	%	Sheets ≤ 0.4 Tiles ≤ 0,25	Sheets ≤ 0.4 Tiles ≤ 0,25	Sheets ≤ 0.4 Tiles ≤ 0,25	Sheets ≤ 0.4 Tiles ≤ 0,25
Residual indentation	EN 433	mm	≈ 0.03	≈ 0.03	≈ 0.03	≈ 0.03
Thermal conductivity	EN 12 524	W/(m.K)	0,25	0,25	0,25	0,25
Colour fastness	EN 20 105 - B02	degree	≥ 6	≥ 6	≥ 6	≥ 6
Chemical resistance	EN 423	class	OK	OK	OK	OK
Anti bacteria & fungicidal treatment	EN ISO 846	-	OK	OK	OK	OK
Surface treatment	-	-	PU	PU	PU	PU

- **DISSIPATIVE FLOORING (EL7):** available upon request.
- **ACCESSORIES:** Please contact us to get our complete offer of skirtings, welding rods and other accessories.
- **INSTALLATION:** We recommend to use our MaxiBond Adhesives and Self Levelling products. Please contact us to get further information about this range.



**Middle East: Gerflor Middle East**

Dammam – KSA  
Tel: +966 13 8471779 - Fax: +966 13 8471781  
Email: info@gerflorme.com

**Riyadh Sales & Technical Support Office**

Riyadh – KSA  
Tel: +966 11 476 5631 - Fax: +966 11 477 2734  
Email: riyadh@gerflorme.com

**Jeddah Sales & Technical Support Office**

Jeddah – KSA  
Tel: +966 12 639 6741 - Fax: +966 12 639 6734  
Email: jeddah@gerflorme.com

**Dubai Sales & Technical Support Office**

Dubai – UAE  
Tel: +971 4 3790808 - Fax: +971 4 3881305  
Email: dubai@gerflorme.com

**Bahrain Sales & Technical Support Office**

Seef District – Bahrain  
Tel: +973 17 581596 - Fax: +973 17581597  
Email: bahrain@gerflorme.com

**Kuwait Sales & Technical Support Office**

Mobile: +965 94941217  
Email: kuwait@gerflorme.com

**Qatar Sales & Technical Support Office**

Doha – Qatar  
Mobile: +974 77029382  
Tel: +974 44318387 - Fax: +974 44982165  
Email: qatar@gerflorme.com

**ASIA: Gerflor Asia**

Tel: +852 9222 6355 - Fax: +852 3006 1449  
Email: gerflorasia@gerflor.com

**CHINA: Gerflor China**

Tel: +8621 63578818 - Fax: +8621 63578998  
Email: gerflorchina@gerflor.com

**RUSSIA: Gerflor zao**

Tel/Fax: +7 495 785 2371  
Email: gerflorrussia@gerflor.ru

**Gerflor International**

Tel: +33 (0) 4 74054000 – Fax: +33 (0) 4 74050313  
Email: gerflorcontract@gerflor.com



gerflor.com

**ARCHITECTURE  
DECORATION  
SPORT  
TECHNOSPECIFIC**

Création : misterBrown - Réalisation : coco & co - 12/2014 - Indicative documentation cost: 2,50 €

**Gerflor.** Don't forget our complementary ranges!



Handrails



Wall Coverings & Protections



Entrance mats



Skirtings & Profiles

and *Be* CONNECTED!



www.gerflor.com



Health & Safety



ISO 14001



Recycling



Life Cycle Analysis

Committed to sustainable development

**Gerflor**  
the flooring group